

DIOLASHeer *ice* -1600S

DIODE LASER HAIR REMOVAL



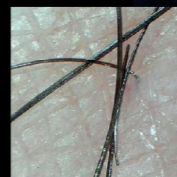
- Comfortable
- Safety
- Effective
- Fast



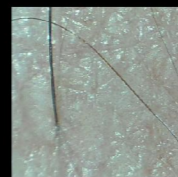
HAIR DETECTION TO INTELLIGENTLY



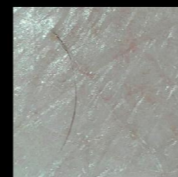
Unique al diode laser technology, equipped with hair detection the results of each treatment are visible to be seen.



Before



After one treatment



After two treatments



More Effective



Safer



More Professional

ACTUAL EFFECT OF DEPILATION

LEGS

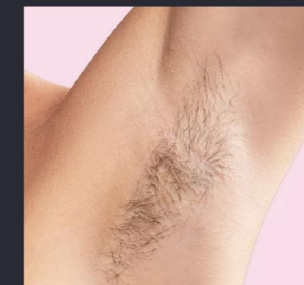


Before

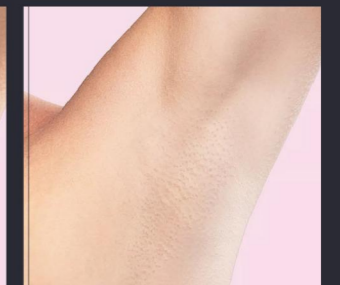


After

ARMPIT



Before



After

BACK

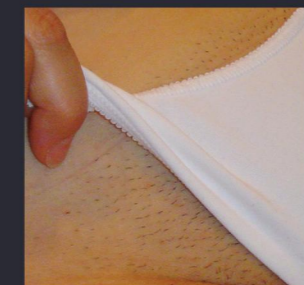


Before

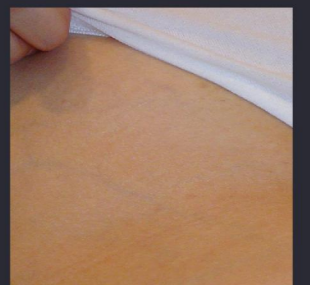


After

BIKINI

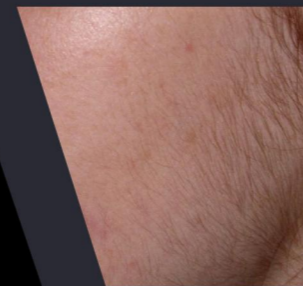


Before



After

CHEEK

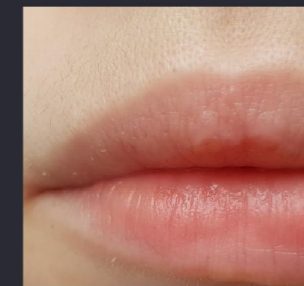


Before

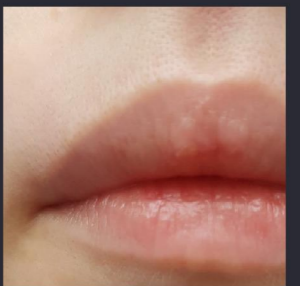


After

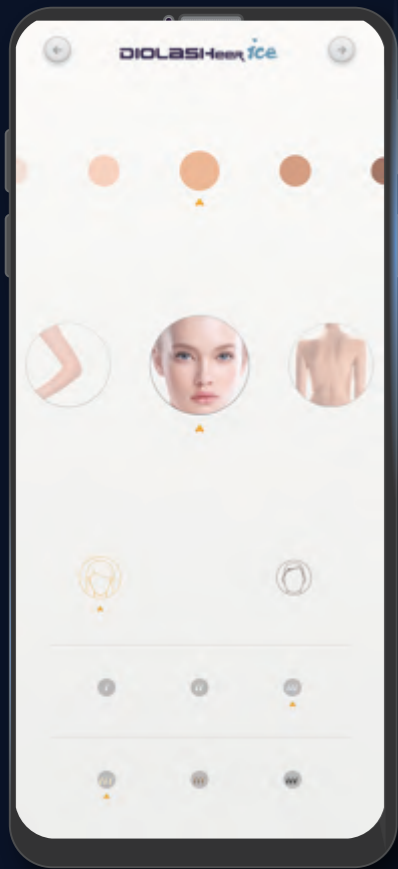
LIP



Before



After



REMOTE CONTROL SYSTEM

- Mobile remote control machine
- Mobile remote setting parameters
- Remotely create and view user information on mobile



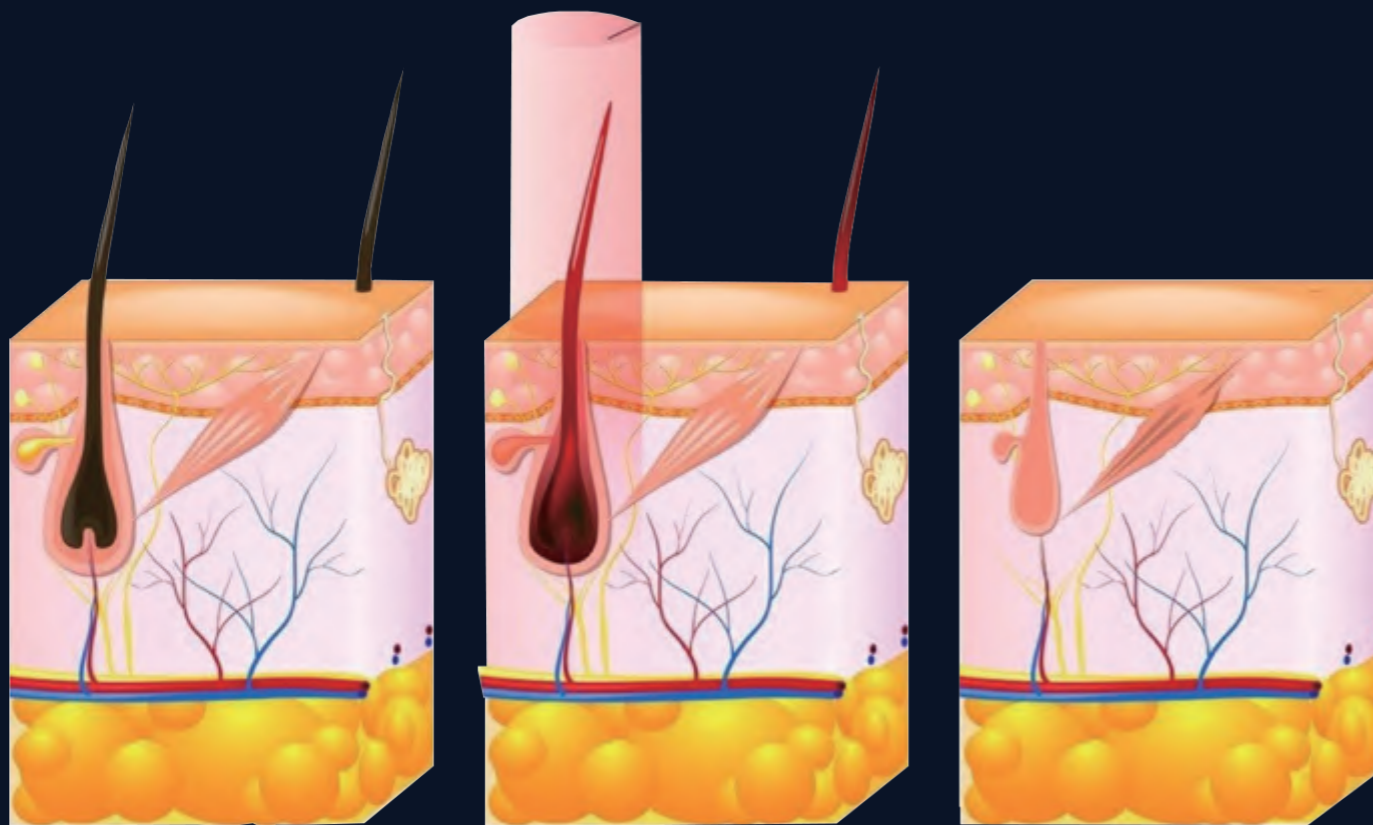
ANDROID SYSTEM

android WIFI and Bluetooth Connection



CLOUD DATA TRANSFER





Before

The melanin absorbs
the laser and heats up

After

PRINCIPLE OF TREATMENT

The principle of diode laser hair removal treatment is based on selective photothermal decomposition. The melanosomes in the hair follicle can selectively absorb the energy of the laser. The laser energy emitted by the machine is easily absorbed by the colored hair follicle without damaging the epidermal tissue. The energy emitted by the laser is absorbed by the hair and the pigment in the hair follicle. It is converted into heat, thus increasing the temperature of the hair follicle. When the temperature rises to a certain level, the hair follicle will be irreversibly damaged, and the hair will lose its original environment and be completely removed.

FOUR WAVELENGTHS, BEST RESULT FOR ALL SKIN TYPES AND ALL HAIR TYPES

755nm

755nm offers more powerful energy absorption by the melanin chromophore, making it ideal for light colored and thin hair. It targets the Bulge of the hair follicle and is especially effective for superficially embedded.

808nm

808nm is classic wavelength in laser hair removal, the 808nm wavelength, offers deep penetration of the hair follicle with high average power, suitable for most skin types and hair types.

940nm

This wavelength provides better absorption by oxyhaemoglobin (coagulation of microvessels that feed the hair root) and a moderate penetration depth that makes it suitable for treating all hairtypes. Melanin absorption is low, making it very safe for working with dark phototypes.

1064nm

1064nm wavelength is characterized by lower melanin absorption, making it a focused solution for darker skin types. At the same time, the 1064nm offers the deepest penetration of the hair follicle.

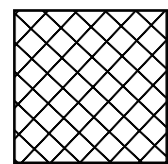
755nm
808nm
940nm
1064nm



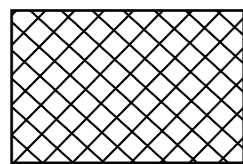


600W-2000W MULTIPLE POWER COMBINATIONS OPTIONAL

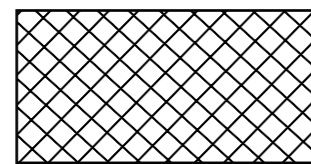
A variety of different powers and different spot sizes are available to meet the treatment needs of different parts of the customer



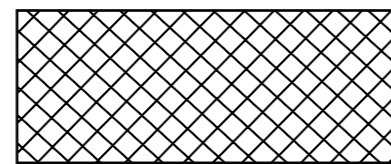
12*12mm
600W 1200W



12*20mm
1200W



12*24mm
1600W 2000W



12*28mm
2000W

FACIAL TIP

Reaching the hard to reach

The special Facial TIP allows treatment of hard to reach areas, including the ears, nostrils and glabella.

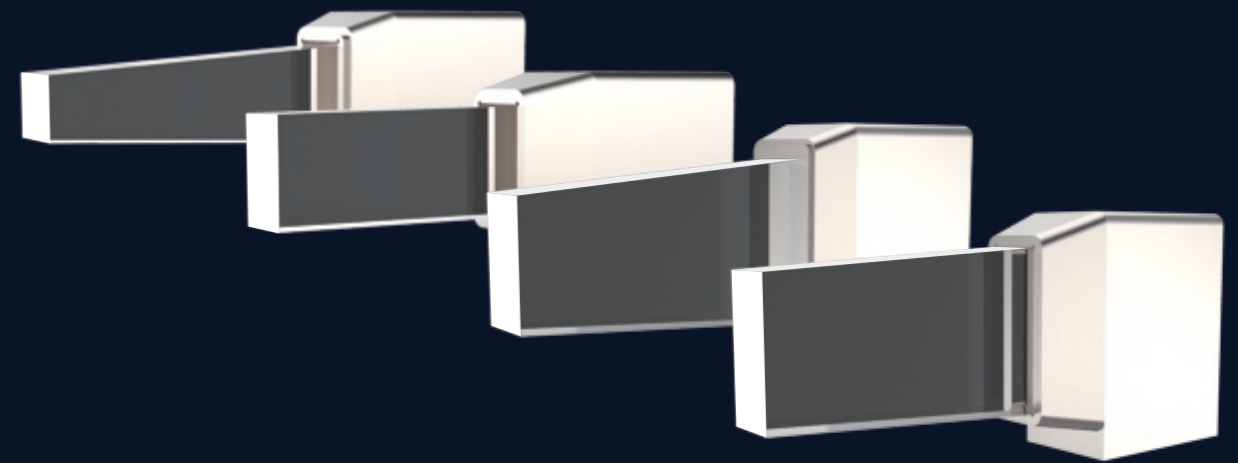


(Only for 12*12mm handle)

20HZ ULTRA-FAST FREQUENCY

The maximum frequency can reach 20 Hz, which means that laser is emitted 20 times per second. The treatment speed is twice as fast as other companies' products.

AMERICAN COHERENT LASER BAR



100 million shots warranty

TOUCH SCREEN HANDLE

More than just display

1.54-inch high-definition OLED touch screen, treatment parameters can be adjusted directly on the handle screen



Energy adjustment



Pulse width adjustment

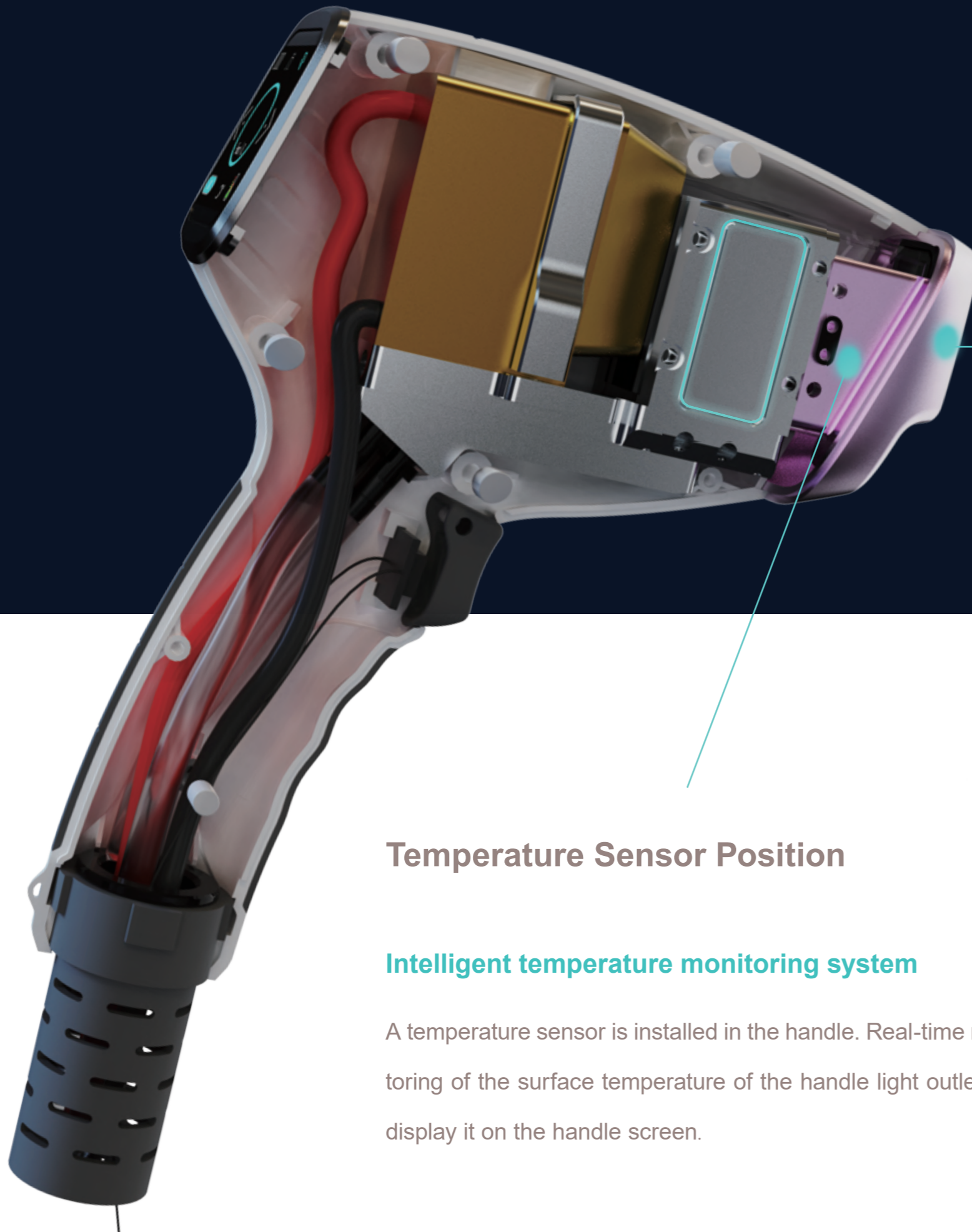


Frequency adjustment



Real-time temperature monitoring





Sapphire crystal

Best light and cold conductivity, ensuring the effectiveness and comfort of the treatment



Temperature Sensor Position

Intelligent temperature monitoring system

A temperature sensor is installed in the handle. Real-time monitoring of the surface temperature of the handle light outlet and display it on the handle screen.



Super refrigeration system

Two semiconductor cooling plates, 108w super cooling power, the surface temperature of the spot can reach -30 °C

20 REAL-TIME INTELLIGENT MONITORING

The whole machine is equipped with 20 intelligent detection functions, including water flow detection, water temperature detection, handle temperature detection, handle connection status detection, water level detection, cooling sheet work detection, etc.

Handle connection status detection

Cooling sheet work detection, etc

Water level detection



Water flow detection

Handle temperature detection

Water temperature detection

Water level detection

Par☒culates
0.01-0.1μm



PP filter

Metal Ion



Ion filter

Par☒culates
0.01-0.1μm



PP filter

Metal Ion



Ion filter

4 FILTERS, QUADRUPLE PROTECTION

Each handle is fitted with an advanced two-stage water filtration system. The first stage adopts PP cotton to filter out impurities and prevent laser blockages, the second stage uses a special Ion filter to filter out metal ions, avoiding inner laser corrosion and prolonging system life.

DIOLASHeer *ice*



SPECIFICATIONS

Power	2000W
Power of handle	500W
wavelength	755nm+808nm+940nm+1064nm
Machine screen	13.1 inch
Handle screen	1.54 inch
Energy density	1-120J/cm ² (Deviation $\leq\pm 2\%$)
Pulse width range	1-200ms
Spot size	12*12mm ; 12*20mm; 12*24mm; 12*28mm
Frequency	1-10HZ
Cooling System	TEC cooling system
Fuse specification	Ø5×25 10A
Voltage	AC220V $\pm 10\%$ 10A 50HZ , 110v $\pm 10\%$ 10A 60HZ